

Adult Echo

NGX5-1

17Hz

14cm

TISO.9

MI 1.0

2D

64%

C 50

P Low

HGen

CF

40%

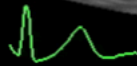
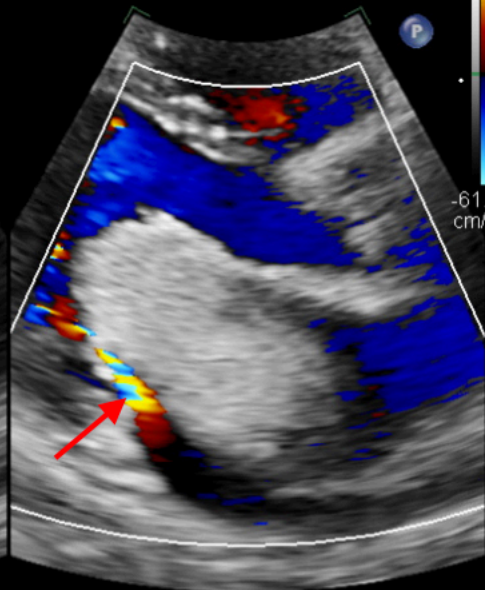
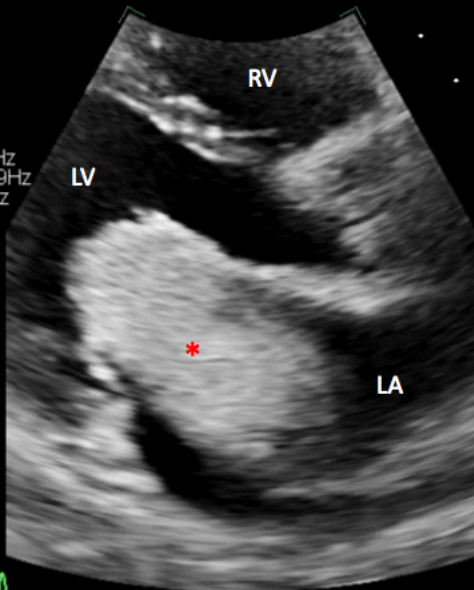
4000Hz

WF 399Hz

2.5MHz

A

B



WW 256
WL 128

98 bpm

Parasternal long axis transthoracic echocardiogram demonstrating an atrial intracardiac mass (*) prolapsing through the mitral valve (A). Color Doppler demonstrates flow acceleration (arrow) through the mitral valve consistent with functional mitral stenosis due to the mass (B). LA: left atrium, LV: left ventricle, RV: right ventricle.