

Left ventricular dimensions, stroke volume and cardiac output by the Teichholz method in post-partum hemorrhage and recovery

During post-partum hemorrhage

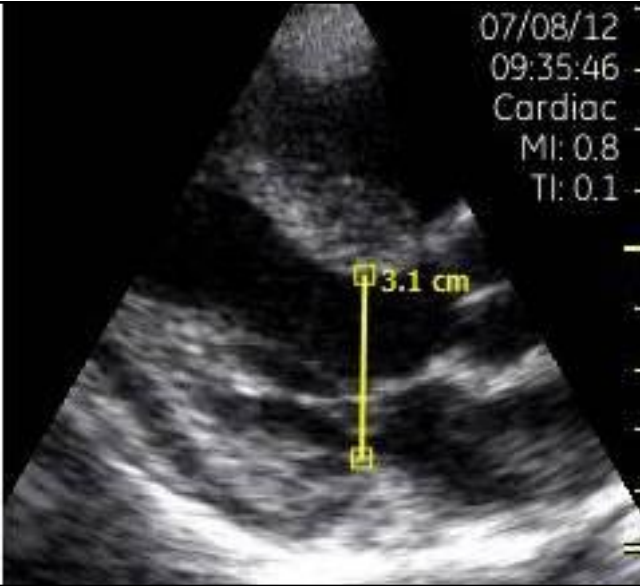
Stroke volume (Teichholz) = 25 mL

HR = 80, Cardiac output = 2.0 L/min

After recovery (5 days later)

Stroke volume (Teichholz) = 37 mL

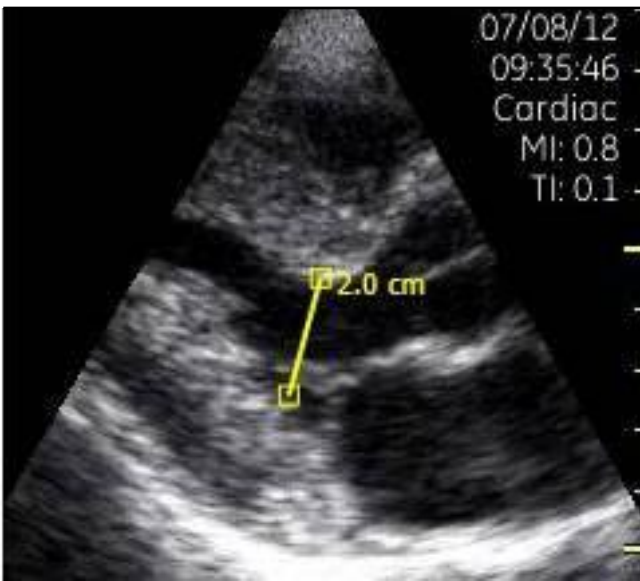
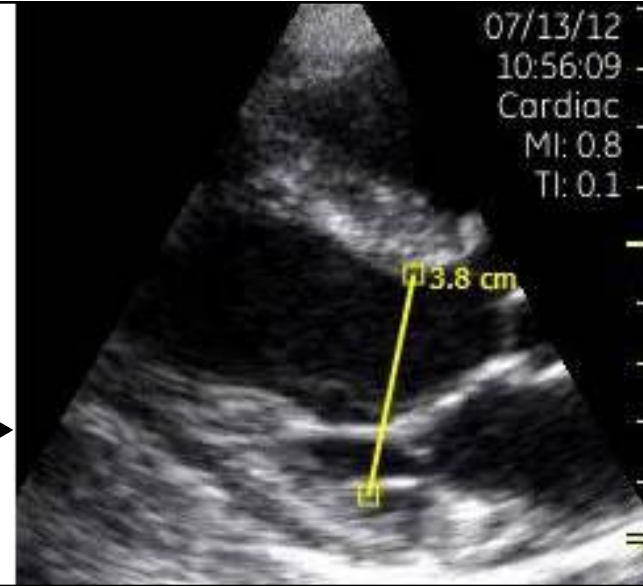
HR = 101, Cardiac output = 3.8 L/min



← End-diastolic volume (Teichholz) = 38 mL

← End-diastole →

End-diastolic volume (Teichholz) = 62 mL →



← End-systolic volume (Teichholz) = 13 mL

← End-systole →

End-systolic volume (Teichholz) = 25 mL →

